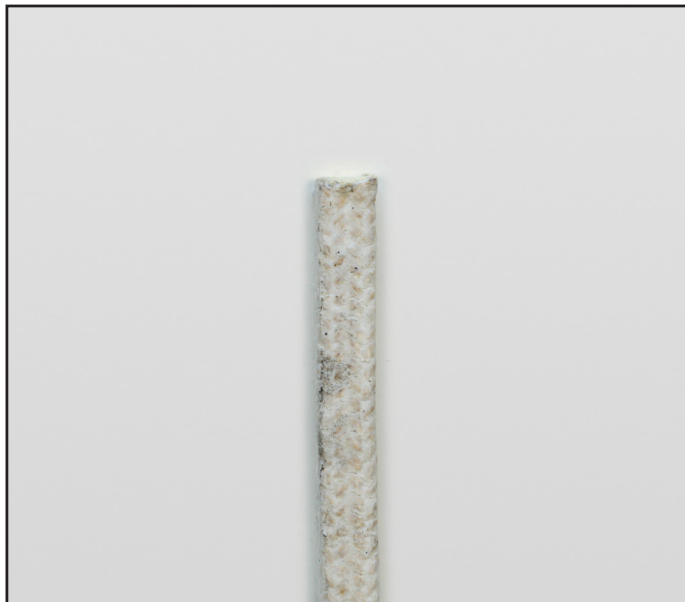




TYPE 5002

ARAMID-PTFE-PACKING



APPLICATION AREAS:

For pumps, valves, sliders, agitators, etc., in most industries where a strong and durable packing is required.

APPLICATION MEDIA:

Water, steam, oils, lubricants, diluted acids and lyes, abrasive media, paints and varnishes, solvents, gases, etc.

BENEFITS:

Hard wearing and economical packing for a wide range of applications in many different industries.

NOT SUITABLE FOR:

Highly concentrated acids and lyes, a few organic compounds, alkali metals.

We recommend a shaft (sleeve) hardness ≥ 60 HRC.

MATERIAL COMPOSITION:

Diagonally braided from high-grade aramid staple fibre yarn, impregnated throughout with PTFE and a silicone-free lubricant.

PROPERTIES:

Very dense packing for high pressure and high speed applications, excellent replacement for PTFE-impregnated asbestos packings, particularly well suited for use with abrasive media.

TEMP	- TEMP	+ TEMP	STEAM
°C	- 100 °C	+ 280 °C	-

pH	DENSITY
2-12	1,45

PRESSURE	ROTATING	RECIPROCATING	STATIC
BAR	20	80	150

V	M/S
-	15

Since all parameters indicated in this catalog represent only rough values concerning characteristics, specification and applications, and can influence each other mutually, the specific application in each case should not be carried out without independent testing and evaluation. All technical information and recommendations are based on experience acquired to date.

Errors on the selection of sealing can lead to damage. Specifications concerning characteristics, specification and applications are implemented subject to unannounced future changes. RUHRLAND STOPFBÜCHSEN PACKUNG GmbH does not assume any liability of any type.